

Cypress Pointe

7445 Ship Builders Drive, Seaford, DE 19973

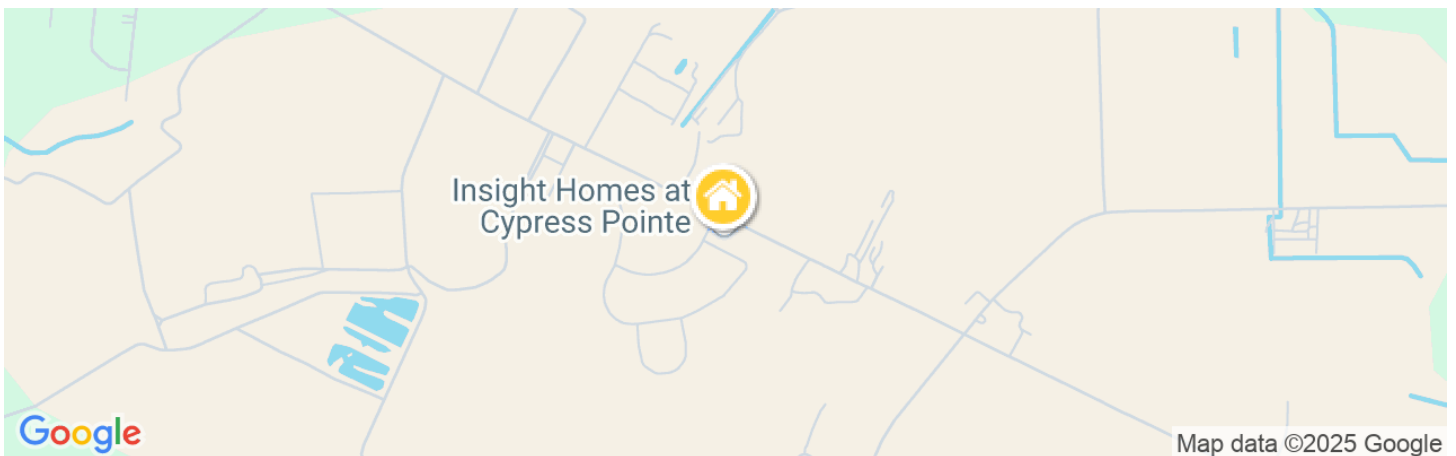


These new homes in Seaford, DE, are located amidst tall trees and fertile farmland. Cypress Pointe offers residents the charm of a country neighborhood located conveniently close to town. Seaford is popular for its great location just minutes from Seaford, Laurel, Salisbury and more. It also offers plenty of opportunities for kayaking, fishing, bird-watching, and much more.

Cypress Pointe is the perfect place to find your new home in Seaford. Streetlights make it a great place to walk, run, or bike anytime. Choice lots back up to woods or ponds. Contact us to reserve yours today!

We do not have a model home at Cypress Pointe, but you're welcome to visit and get to know the neighborhood! We do have a decorated model nearby at Hawthorne.

From Route 13 (heading South from Seaford): Turn right onto Camp Road (turns into Bethel Road). Turn right onto Woodland Ferry Road. The community is on your left (Ship Builder Drive).



sales@insightde.com
302-956-9337



Features, homes and pricing are subject to change without previous notice. Home designs are artist renderings and some homes offered may have design differences.

Prices good through 3/14/2025

www.itsjustabetterhouse.com



Cypress Pointe

7445 Ship Builders Drive, Seaford, DE 19973



Lloyd

\$421,900

1,712 - 2,760 Sq. Ft.
3 - 5 BR | 2 - 3 BA | 1 or 2 STORY



Whatley

\$440,900

1,979 - 3,590 Sq. Ft.
3 - 6 BR | 2 - 4 BA | 1 or 2 STORY



Brenner

\$446,900

1,975 - 2,489 Sq. Ft.
3 - 4 BR | 2.5 - 3.5 BA | 2 STORY



Jerry

\$464,900

2,140 - 3,401 Sq. Ft.
3 - 6 BR | 2 - 3.5 BA | 1 or 2 STORY



Frank

\$468,900

2,572 - 3,010 Sq. Ft.
4 - 5 BR | 3 BA | 2 STORY



Peterman II

\$537,900

3,145 - 3,735 Sq. Ft.
4 - 6 BR | 3 - 4 BA | 2 STORY



Cartwright

\$435,900

1,821 - 3,817 Sq. Ft.
3 - 5 BR | 2 - 3.5 BA | 1 or 2 STORY



Drake

\$444,900

1,918 - 2,536 Sq. Ft.
4 BR | 2 BA | 1 STORY



Elaine

\$449,900

2,181 - 2,603 Sq. Ft.
3 - 4 BR | 2 - 2.5 BA | 1 STORY



Nelson

\$466,900

2,405 - 3,941 Sq. Ft.
3 - 5 BR | 2 - 3.5 BA | 1 or 2 STORY



Reston

\$514,900

2,663 - 3,067 Sq. Ft.
3 - 6 BR | 2.5 - 3.5 BA | 2 STORY



Kramer

\$565,900

3,167 - 4,277 Sq. Ft.
3 - 6 BR | 2.5 - 4 BA | 2 STORY

sales@insightde.com

302-956-9337

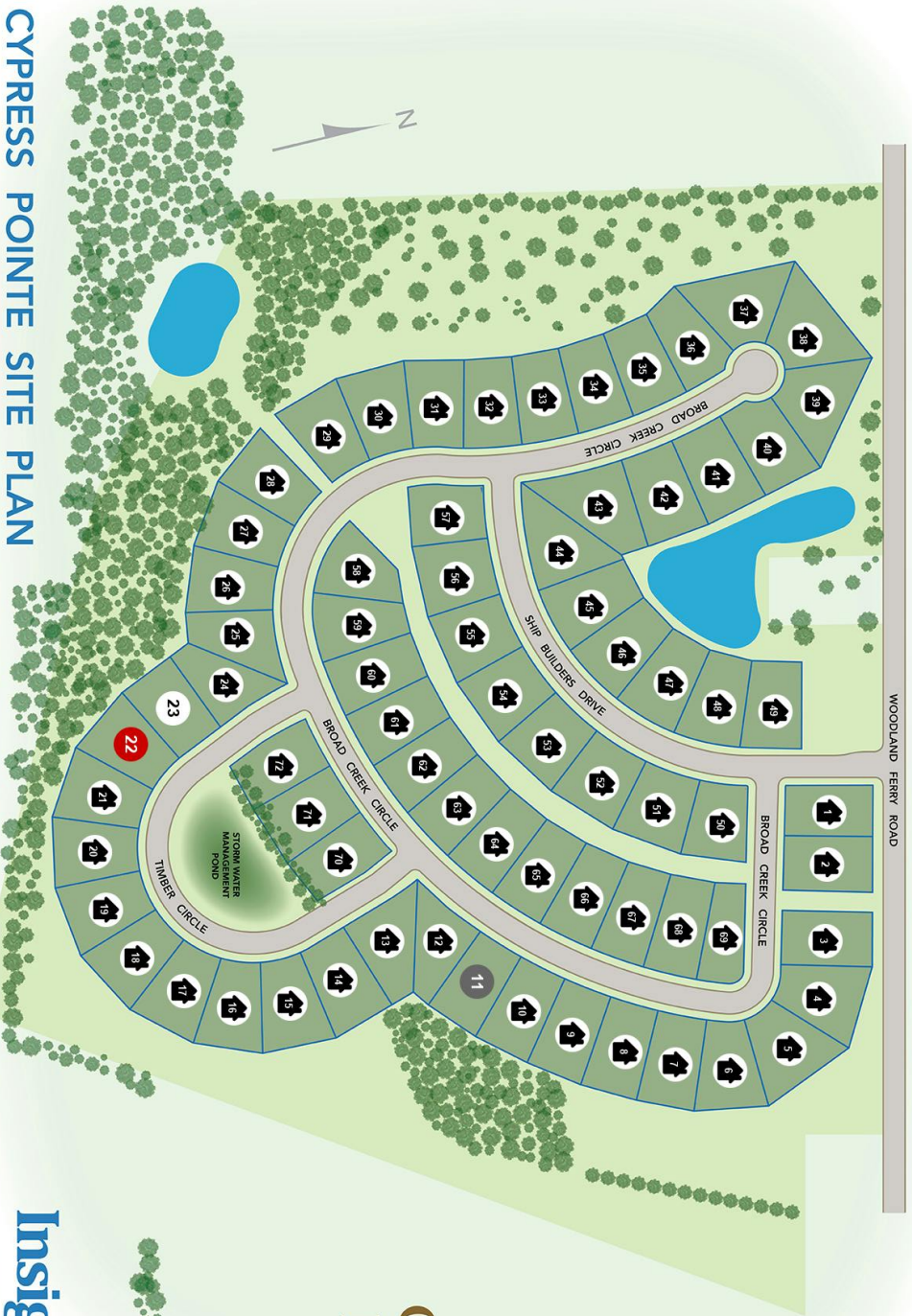


Features, homes and pricing are subject to change without previous notice. Home designs are artist renderings and some homes offered may have design differences.

Prices good through 3/14/2025

www.itsjustabetterhouse.com





CYPRESS POINTE SITE PLAN

All site plans, community maps and computer generated or enhanced depictions shown are conceptual in nature, which may not accurately represent the actual condition of the item(s) being represented and are subject to change without notice. All buying decisions should be based on visiting and viewing the physical homesite.



CYPRESS POINTE

- FURNISHED MODEL HOME
- AVAILABLE LOTS
- NOT AVAILABLE
- SOLD LOTS
- COMPLETED HOME
- MOVE-IN READY HOME